

# ***TRIPLE SELF CONTAINED TRAILERED UNIT***

8'W (W/FENDERS) X 17'7" L (W/TONGUE) X 9'9" H (W/TIRES)

## **SPECS AND FEATURES:**

- AVAILABLE ON SKID MOUNT FOR EASY MOVEMENT WITH FORK LIFT
- OR ON CUSTOM MADE TRAILER
- ALL SELF-CONTAINED UNITS ARE INSULATED FOR WINTER
- ONE PINT FLUSH PORCELAIN TOILET
- LOW FLOW URINAL VALVE AND SINK FAUCET
- STAINLESS STEEL SINK
- 1000 WATT 110 VOLT FAN FORCE HEATER
- CONTINUOUS POWER VENTILATION SYSTEM
- HYDRO APPROVED 2-110V 15 AMP PLUG & CORD
- OR HARD WIRED 220V 30AMP ELECTRICAL SERVICE
- HEAVY DUTY NON SLIP FLOORING
- NON-SLIP STEEL STEP
- HEAVY DUTY WHITE FIBERGLASS/RUBBER ROOF
- EASY ACCESS FOR PUMPING WASTE/ADDING WATER
- HEAVY DUTY DOOR CLOSER & CHECK CHAIN
- HEAVY DUTY GRIP HANDLES AND KEY LOCKS
- ALL PLASTIC HOLDING TANKS
- 3-78 GALLON FRESH WATER TANK
- 3-108 GALLON WASTE TANK
- DUAL TISSUE HOLDER
- DELUXE EASY FILL SOAP DISPENSER
- SECURITY SCREENS
- SEALED LIGHT WITH VANDALISM PROOF MIRROR

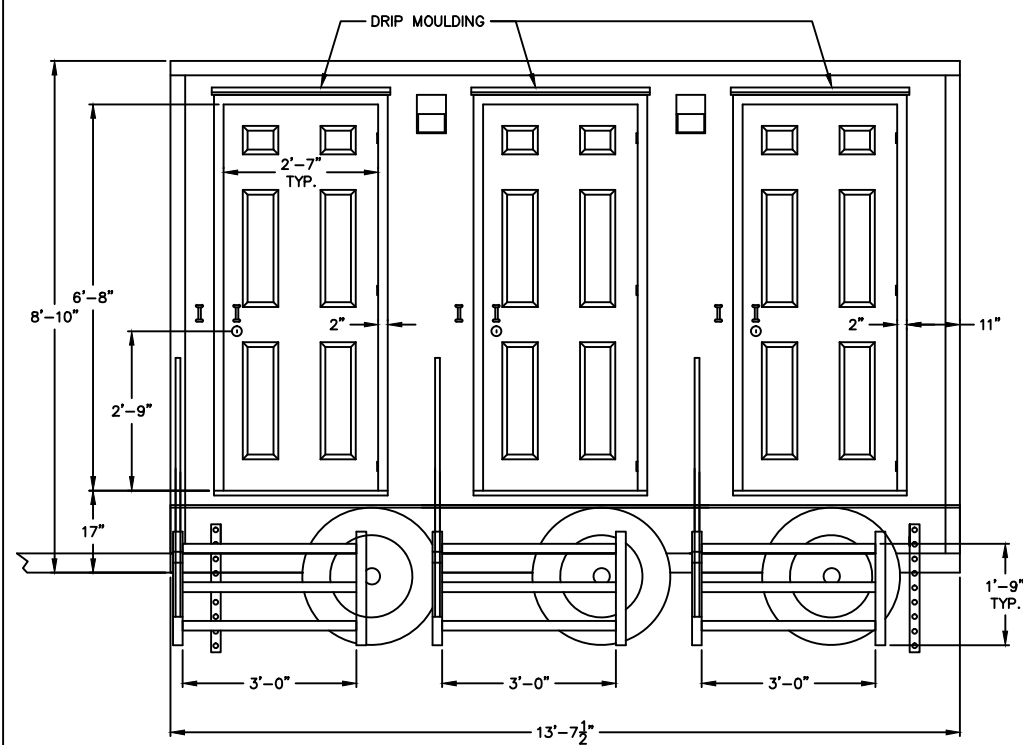


**HALCO**  
**PORTABLES**

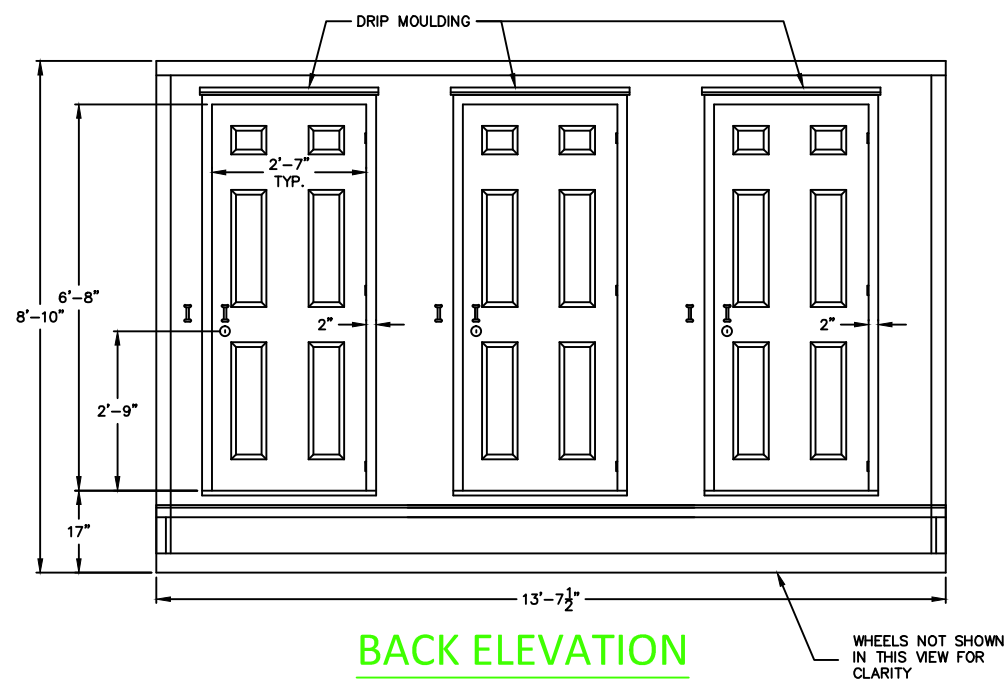
OWNED & OPERATED BY HALCO MOBILE MANUFACTURING SALES & SERVICE INC. | 42 Clark St. Welland L3B 5W5



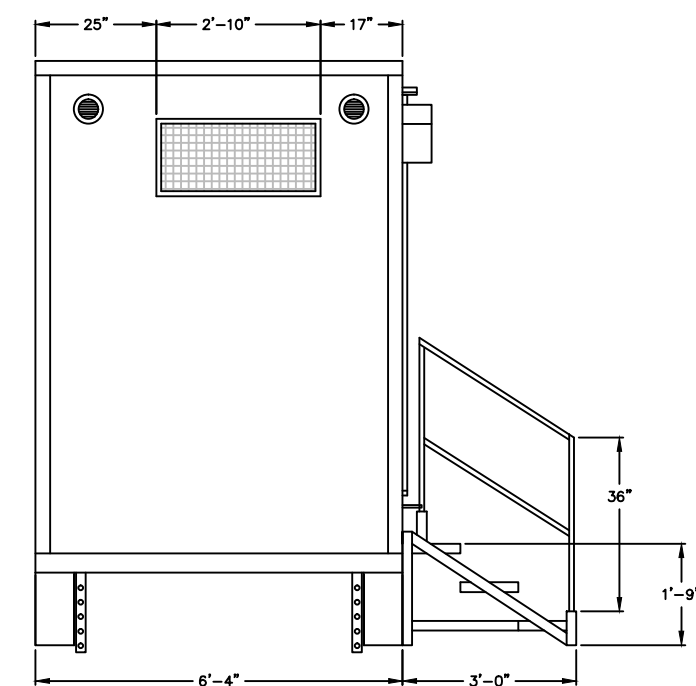
905-714-4688 (Local) 1-866-695-8644 (Toll Free)



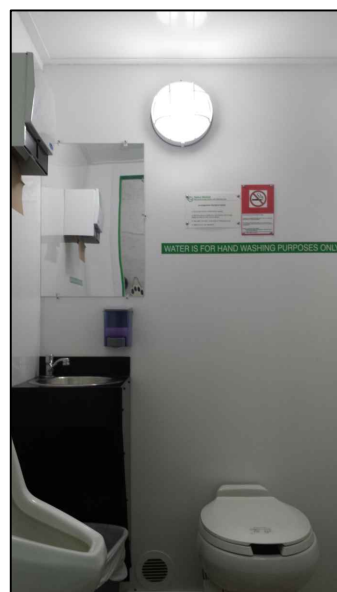
FRONT ELEVATION



BACK ELEVATION



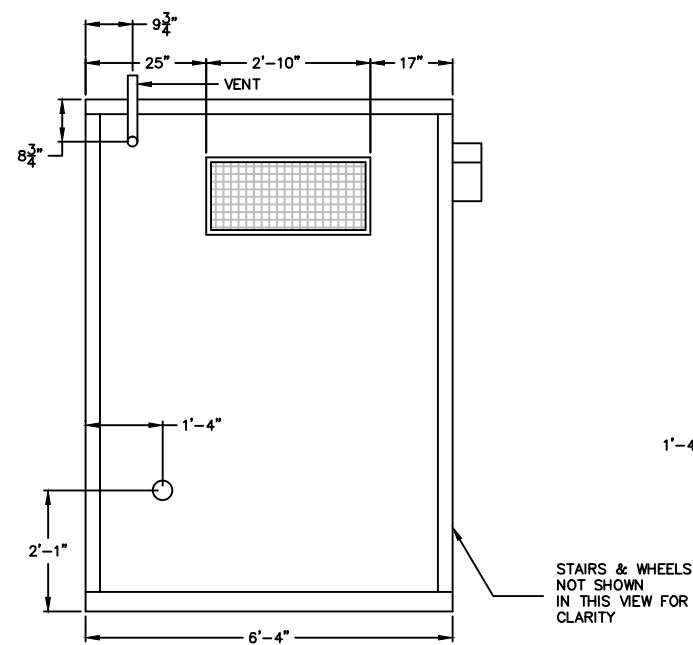
RIGHT SIDE ELEVATION



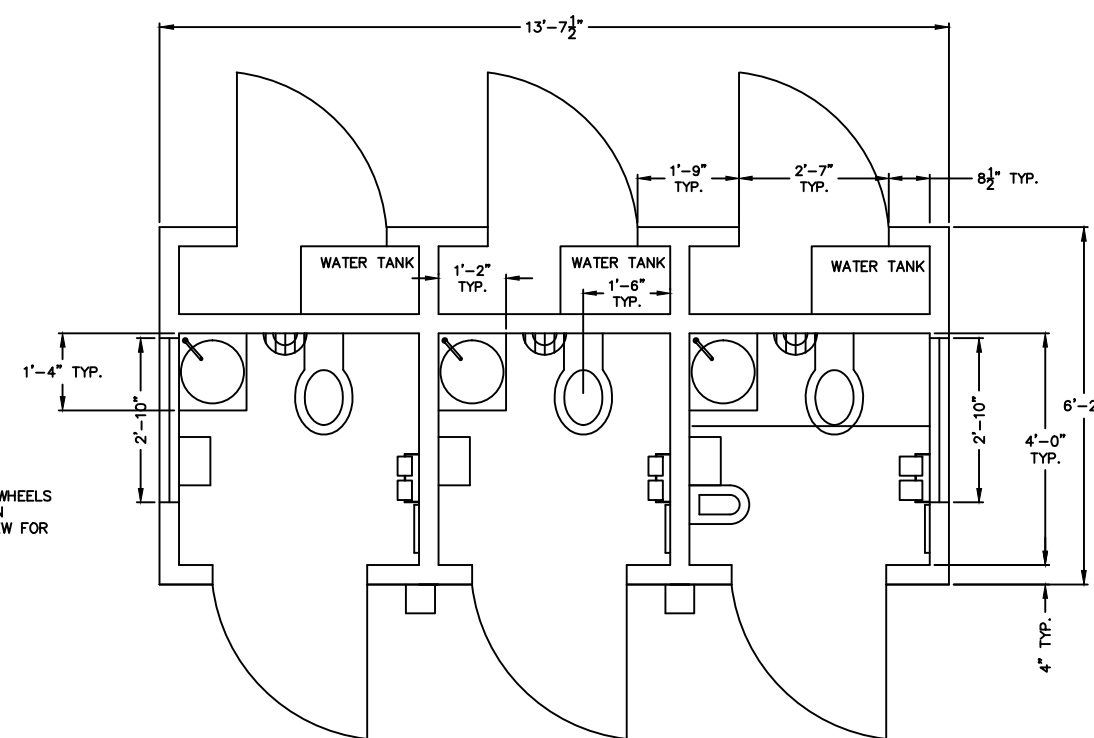
INSIDE VIEW



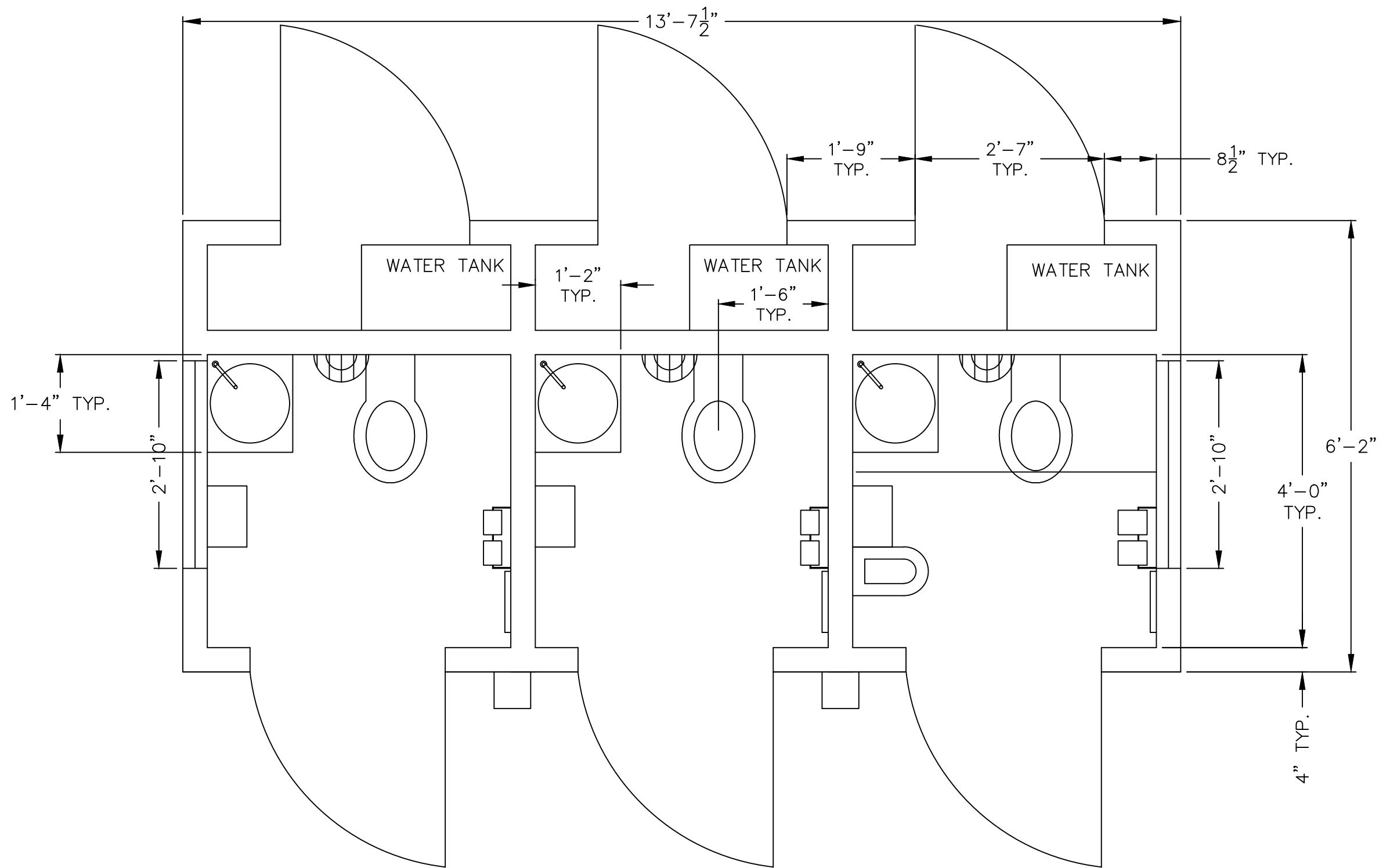
BACK COMPARTMENT



LEFT SIDE ELEVATION



PLAN VIEW



## PLAN VIEW